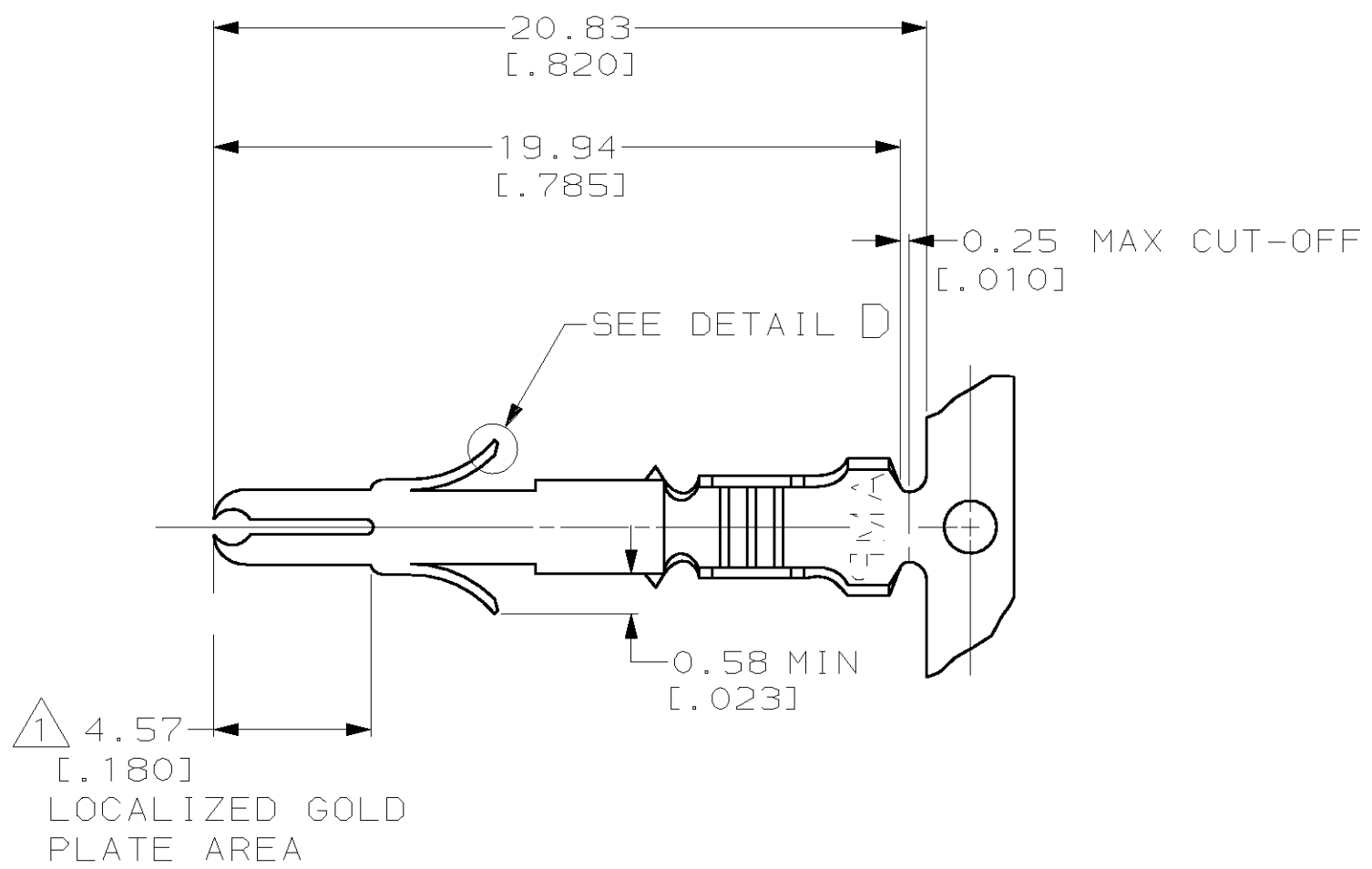
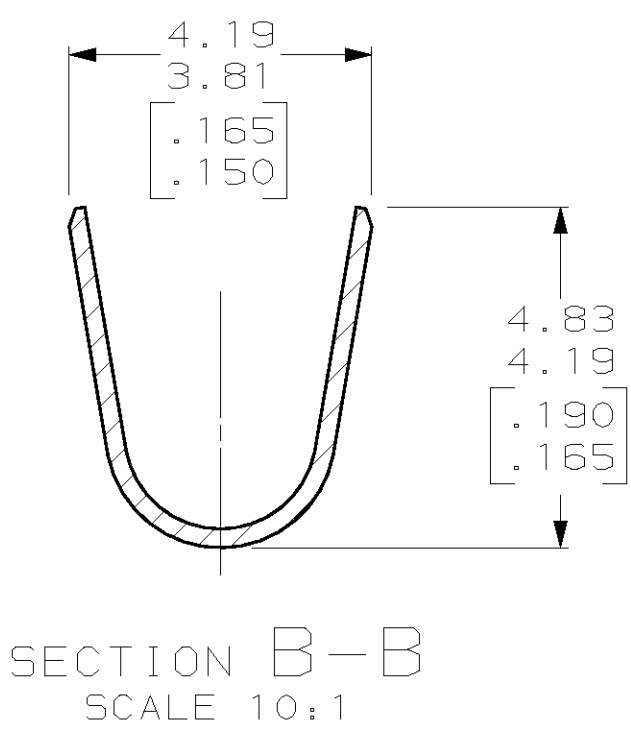
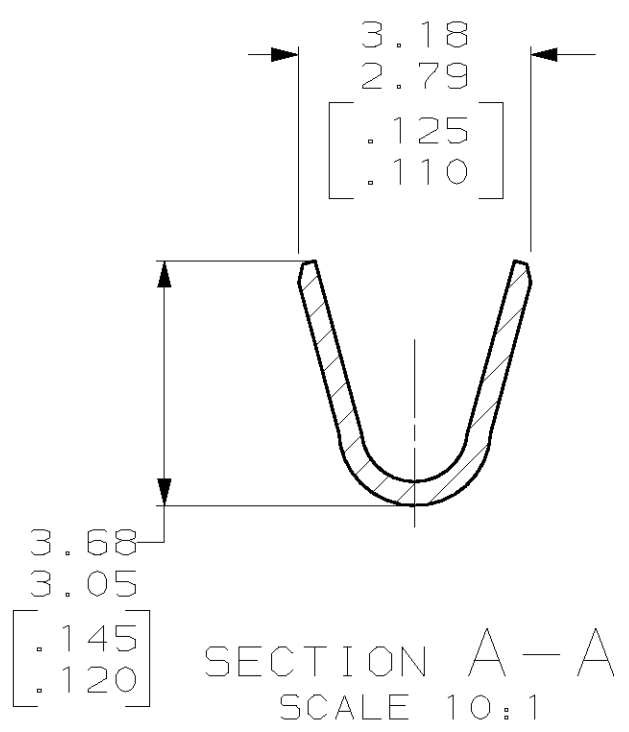
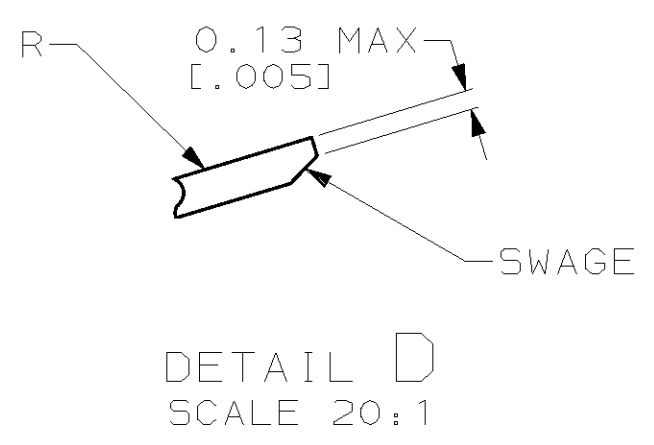
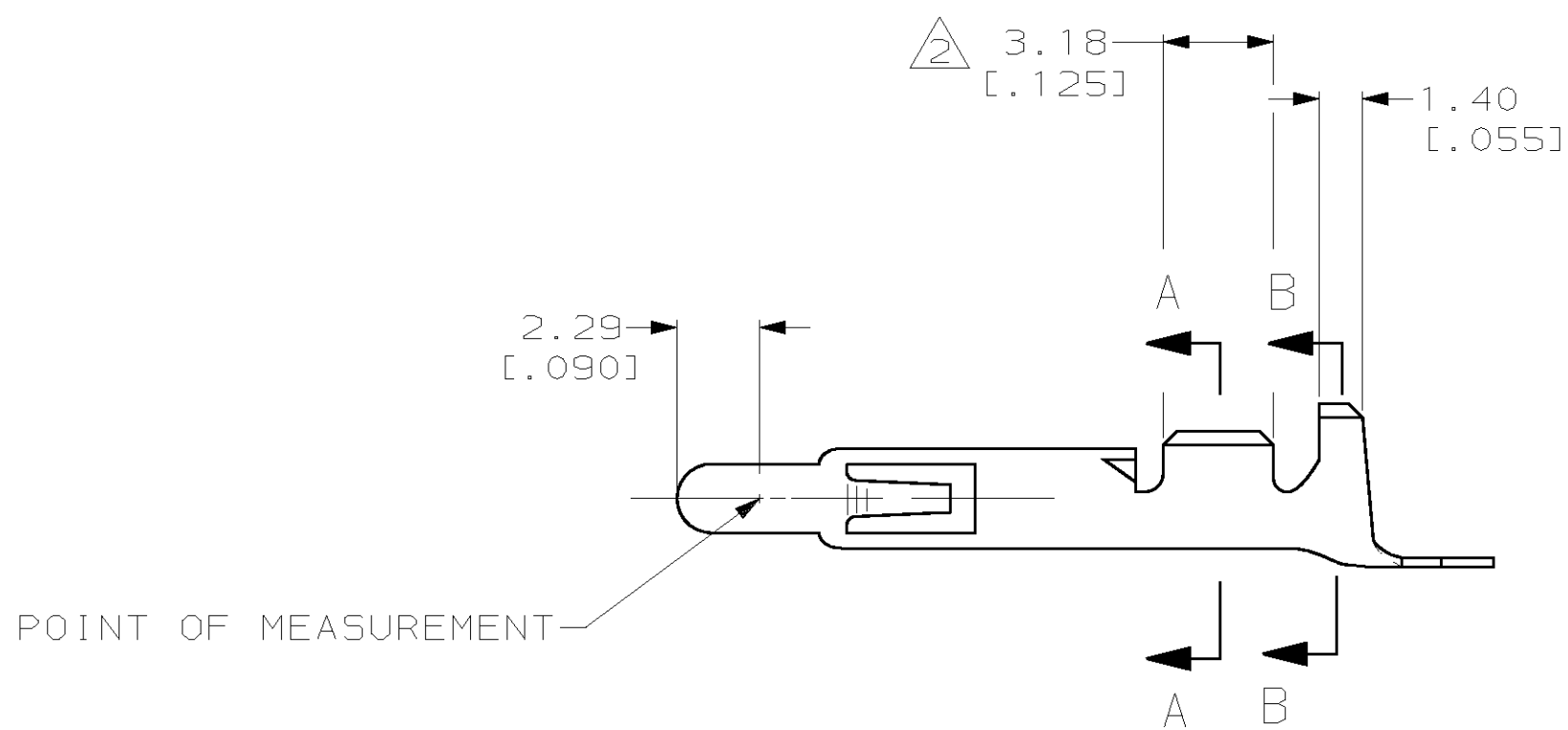
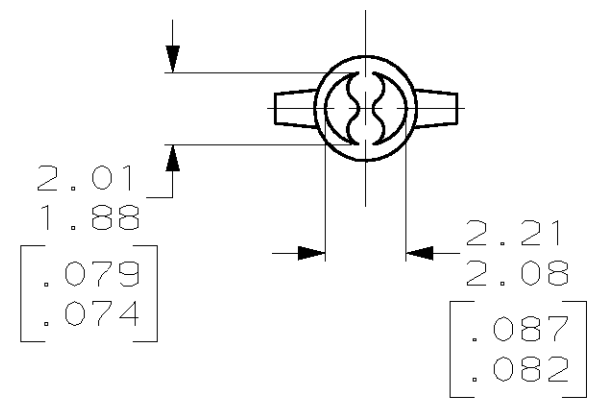


THIS DRAWING IS UNPUBLISHED. RELEASED FOR PUBLICATION
 BY AMP INCORPORATED, ALL RIGHTS RESERVED.

LOC	DIST	REVISIONS					
CM	53	P	LTR	DESCRIPTION	DATE	DWN	APVD
		Y		REVISED PER EC 063B-0359-02	21-JUN-02	KW	DC



- 1 PLATED WITH 0.00076 [.000030] GOLD, OVER 0.00127 [.000050] NICKEL UNDERPLATE.
- 2 PLATED INTERNALLY WITH 0.00076 [.000030] GOLD.
- 3. DIMENSIONS IN BRACKETS ARE IN INCHES.
- 4 PRELIMINARY, NOT FOR PRODUCTION.



4	-	0.31 [.012] BE CU	PRE-TIN	350687-9
	350705-7	0.31 [.012] BRASS	GOLD 1	350687-7
4	-	0.31 [.012] PH BRZ	GOLD 1	350687-5
	350705-2	0.31 [.012] BRASS	GOLD 1 2	350687-2
	350705-1	0.31 [.012] BRASS	PRE-TIN	350687-1
	LOOSE PIECE (REF)	MATERIAL	FINISH	PART NUMBER

THIS DRAWING IS A CONTROLLED DOCUMENT.

DWN K. WHITAKER 12-MAY-2000	AMP Incorporated Harrisburg, PA 17105-3608					
CHK K. COBLE 12-MAY-2000						
APVD K. COBLE 12-MAY-2000						
NAME						
DIMENSIONS: mm [INCHES]	TOLERANCES UNLESS OTHERWISE SPECIFIED:	PRODUCT SPEC	SIZE	CAGE CODE	DRAWING NO	RESTRICTED TO
0 PLC ±	1 PLC ±	-	A2	00779	C- 350687	-
2 PLC ±0.13(.005)	3 PLC ±	APPLICATION SPEC	SCALE	SHEET	OF	REV
4 PLC ±	ANGLES ±0°30'	WEIGHT	5:1	1	1	Y
WIRE RANGE 20-14 AWG	FINISH 3.30(.130) DIA MAX	CUSTOMER DRAWING				

METRIC

350687